



## SPINN Series

2,2 to 15 kW

Air. Anytime. Anywhere.



# Join the ABAC advantage

## Our brand values

ABAC Aria Compressa was founded in 1980 but its compressed air heritage dates back over 60 years. Customer expectations have always driven product development, resulting in a portfolio which fulfills your compressed air needs and offers you the value you are looking for. Additionally, our worldwide presence makes sure we are at your service at all times.

Benefit from these five strong values and team up with ABAC today.

### ★ Technology leader

With years of experience, ABAC can rely on an extensive technical know-how to provide you with compressed air solutions that get the job done. Understanding the needs of our customers, we lead the compressed air field by example.

### ★ Recognised quality

You expect quality and reliability from your ABAC compressor. Our production facilities combine history and experience with the latest production methods. We certify and guarantee every product we manufacture to make sure that ABAC is a partner you can rely on.

Air. Anytime. Anywhere.

### ★ Value for money

As a customer, you want a product that offers you value for money. ABAC does just that, offering a full portfolio of products at a competitive price. With the right mix of flexibility and experience we deliver value at the right price to the industrial, professional and DIY compressed air markets.



### ★ Extensive network

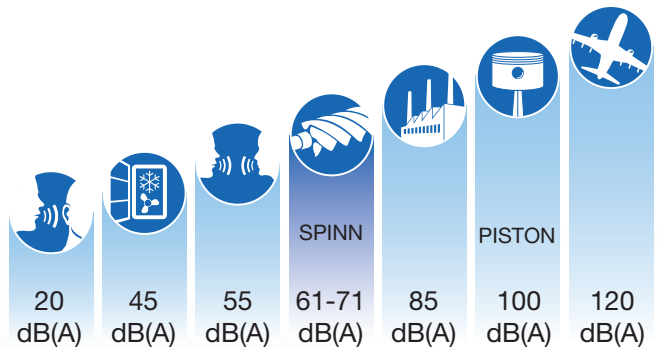
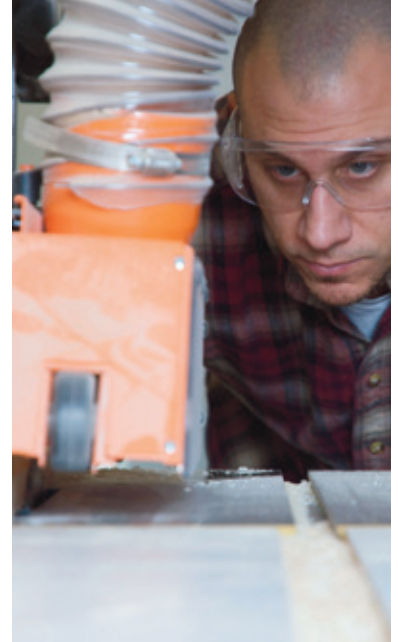
A vast network of distributors and resellers (over 1000 in more than 100 countries) means that there is always an ABAC representative nearby to provide you with service, support or products. As such, all you need to do is focus on your business, ABAC takes care of the rest.

### ★ User-friendly design

Developing products with the customer in mind has always been a mainstay of ABAC's philosophy. As a result, ABAC compressors are designed to be easy to use providing you compressed air that is available when and where you need it.

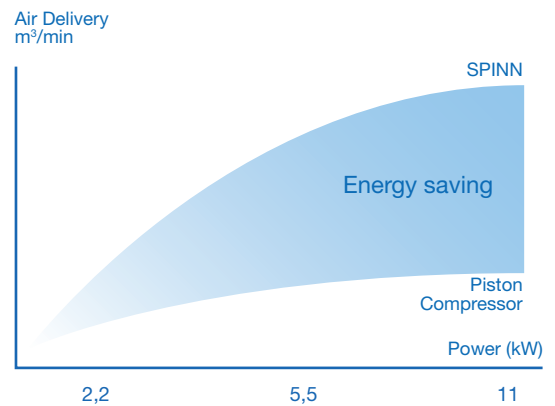
# Meet your new workmate

Your comfort matters. Therefore, ABAC created a small screw compressor with an extremely low noise level, comparable to your air conditioning system. Very compact and easy to install, ABAC SPINN compressors offer excellent savings on installation and piping costs, especially on the compact model with dryer.

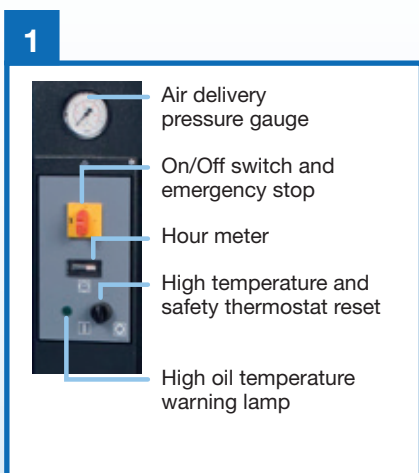
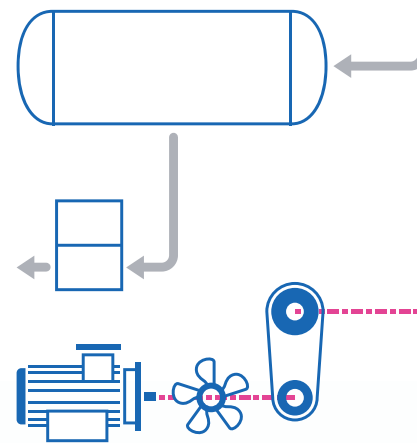


## A safe investment for continuous use

ABAC SPINN compressors are 30% more efficient than piston compressors and have a longer lifetime due to less vibration and fewer moving parts.

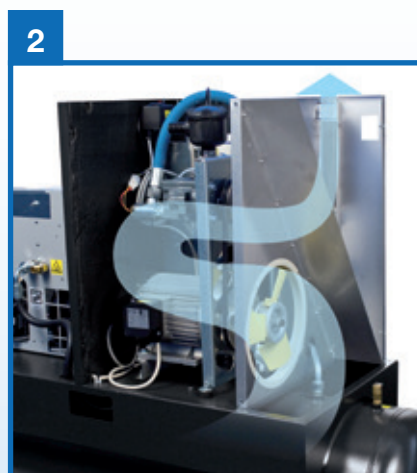






### 1 Easy operating control panel

All the info you need to operate your compressor at a glance.



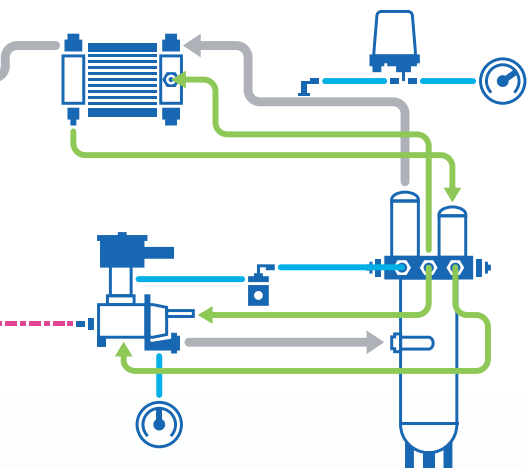
### 2 Efficient cooling

A coaxial fan provides excellent cooling of all the internal components, better than water cooled systems. This leads into higher efficiency and better reliability in operation.



### 3 Easy and cost effective maintenance

Long service intervals and external oil level check. Quick access to air & oil filters, air & oil separator, oil fill & drain.



## SPINN.E Series Dryer versions

Extra compact, cost efficient and easy installation where moisture free air is required.



### Reliability, efficiency and robustness

The most advanced technologies in rotor design and oil household. Optimized seal arrangements and bearings.



### Infologic<sup>2</sup> Basic Controller

Advance monitoring and simple day-today configuration and control for your compressor.

- Pressure and temperature readings.
- Running hours, load hours.
- Maintenance warnings.
- Failure alarms.
- Fast pressure setting directly on the controller.



### Less noise and more energy saving

The automatic condensate drain discharges only water, no air. This silent process respects your working environment.



# SPINN Series

## 2,2 to 7,5 kW

Power sizes 2,2 to 7,5 kW



Type	liters	bar	psi	l/min	cfm	HP	kW	dB(A)	L	W	H	Kg			
<b>SPINN</b> <b>Floor mounted</b>  Only 0,38 m <sup>2</sup>	0	8	116	300	10,6	3	2,2	61	620	612	995	99			
				445	15,8	4	3	61	620	612	995	103			
				560	19,8	5,5	4	62	620	612	995	105			
				700	24,8	7,5	5,5	64	620	612	995	110			
				1008	35,7	10	7,5	66	620	612	995	160			
		10	145	240	8,5	3	2,2	61	620	612	995	99			
				320	11,3	4	3	61	620	612	995	103			
				470	16,6	5,5	4	62	620	612	995	105			
				600	21,2	7,5	5,5	64	620	612	995	110			
				920	32,6	10	7,5	66	620	612	995	160			
				200	8	116	297	10,5	3	2,2	61	1429	612	1300	155
							443	15,6	4	3	61	1429	612	1300	157
							560	19,8	5,5	4	62	1429	612	1300	159
							697	24,6	7,5	5,5	64	1429	612	1300	164
1008	35,7	10	7,5				66	1429	612	1300	214				
10	145	240	8,5		3	2,2	61	1429	612	1300	155				
		320	11,3		4	3	61	1429	612	1300	157				
		470	16,6		5,5	4	62	1429	612	1300	159				
		600	21,2		7,5	5,5	64	1429	612	1300	164				
<b>SPINN</b> <b>Tank mounted</b>  Only 0,87 m <sup>2</sup> (200 L vessel size)	270	8	116	297	10,5	3	2,2	61	1531	612	1394	166			
				443	15,6	4	3	61	1531	612	1394	168			
				560	19,8	5,5	4	62	1531	612	1394	170			
				697	24,6	7,5	5,5	64	1531	612	1394	175			
				1008	35,7	10	7,5	66	1531	612	1394	225			
		10	145	240	8,5	3	2,2	61	1531	612	1394	166			
	320			11,3	4	3	61	1531	612	1394	168				
	470			16,6	5,5	4	62	1531	612	1394	170				
	<b>SPINN.E</b> <b>Tank mounted + dryer</b>  Only 0,94 m <sup>2</sup> (270 L vessel size)	200	8	116	297	10,5	3	2,2	61	1429	612	1300	187		
					443	15,6	4	3	61	1429	612	1300	191		
					560	19,8	5,5	4	62	1429	612	1300	193		
					697	24,6	7,5	5,5	64	1429	612	1300	198		
					1008	35,7	10	7,5	66	1429	612	1300	254		
10			145	240	8,5	3	2,2	61	1429	612	1300	155			
		320		11,3	4	3	61	1429	612	1300	157				
		470		16,6	5,5	4	62	1429	612	1300	159				
270		8	116	600	21,2	7,5	5,5	64	1429	612	1300	164			
				920	32,6	10	7,5	66	1429	612	1300	249			
				297	10,5	3	2,2	61	1531	612	1394	198			
				443	15,6	4	3	61	1531	612	1394	202			
				560	19,8	5,5	4	62	1531	612	1394	204			
	10	145	697	24,6	7,5	5,5	64	1531	612	1394	209				
			1008	35,7	10	7,5	66	1531	612	1394	265				
270	10	145	240	8,5	3	2,2	61	1531	612	1394	166				
			320	11,3	4	3	61	1531	612	1394	168				
			470	16,6	5,5	4	62	1531	612	1394	170				
			600	21,2	7,5	5,5	64	1531	612	1394	175				
			920	32,6	10	7,5	66	1531	612	1394	260				



# SPINN Series

## 5,5 to 15 kW



Power sizes 5,5 to 15 kW



Type	liters	bar	psi	l/min	cfm	HP	kW	dB(A)	L	W	H	Kg
<b>SPINN</b> <b>Floor mounted</b>  Only 0,53 m <sup>2</sup>	0	8	116	846	29,9	7,5	5,5	64	850	720	980	160
				1140	40,3	10	7,5	65	850	720	980	170
				1620	57,2	15	11	69	850	720	980	185
				1860	65,7	20	15	71	850	720	980	200
		10	145	696	24,6	7,5	5,5	64	850	720	980	160
				996	35,2	10	7,5	65	850	720	980	170
				1416	50,0	15	11	69	850	720	980	185
				1680	59,3	20	15	71	850	720	980	200
		13	188	780	27,5	10	7,5	65	850	720	980	170
				1152	40,7	15	11	69	850	720	980	185
				1332	47,0	20	15	71	850	720	980	200
				846	29,9	7,5	5,5	64	1543	720	1337	207
<b>SPINN</b> <b>Tank mounted</b>  Only 1,26 m <sup>2</sup> (500 L vessel size)	270	8	116	1140	40,3	10	7,5	65	1543	720	1337	217
				1620	57,2	15	11	69	1543	720	1337	232
				1860	65,7	20	15	71	1543	720	1337	247
				696	24,6	7,5	5,5	64	1543	720	1337	207
		10	145	996	35,2	10	7,5	65	1543	720	1337	217
				1416	50,0	15	11	69	1543	720	1337	232
				1680	59,3	20	15	71	1543	720	1337	247
				780	27,5	10	7,5	65	1543	720	1337	217
		13	188	1152	40,7	15	11	69	1543	720	1337	232
				1332	47,0	20	15	71	1543	720	1337	247
				846	29,9	7,5	5,5	64	1945	720	1468	257
				1140	40,3	10	7,5	65	1945	720	1468	267
<b>SPINN.E</b> <b>Tank mounted + dryer</b>  Only 0,99 m <sup>2</sup> (270 L vessel size)	270	8	116	1620	57,2	15	11	69	1543	720	1337	265
				1860	65,7	20	15	71	1543	720	1337	280
				696	24,6	7,5	5,5	64	1543	720	1337	242
				996	35,2	10	7,5	65	1543	720	1337	250
		10	145	1416	50,0	15	11	69	1543	720	1337	265
				1680	59,3	20	15	71	1543	720	1337	280
				780	27,5	10	7,5	65	1543	720	1337	250
				1152	40,7	15	11	69	1543	720	1337	265
		13	188	1332	47,0	20	15	71	1543	720	1337	280
				846	29,9	7,5	5,5	64	1945	720	1468	262
				1140	40,3	10	7,5	65	1945	720	1468	270
				1620	57,2	15	11	69	1945	720	1468	285
500	8	116	1860	65,7	20	15	71	1945	720	1468	300	
			696	24,6	7,5	5,5	64	1945	720	1468	262	
			996	35,2	10	7,5	65	1945	720	1468	270	
			1416	50,0	15	11	69	1945	720	1468	285	
	10	145	1680	59,3	20	15	71	1945	720	1468	300	
			780	27,5	10	7,5	65	1945	720	1468	270	
			1152	40,7	15	11	69	1945	720	1468	285	
			1332	47,0	20	15	71	1945	720	1468	300	

# The world of ABAC



Care. Trust. Efficiency.

## Care.

Care is what service is all about: professional service by knowledgeable people, using high-quality original parts.

## Trust.

Trust is earned by delivering on our promises of reliable, uninterrupted performance and long equipment lifetime.

## Efficiency.

Equipment efficiency is ensured by regular maintenance. Efficiency of the service organization is how Original Parts and Service make the difference.

Your Authorized Distributor

20.009.96.669



[www.abacaircompressors.com](http://www.abacaircompressors.com)

Air. Anytime. Anywhere.